

Additional information



Proposed Excursions for Wednesday 10th July afternoon and evening

To reserve excursions requiring a reservation, please send a message to iats2019accounts@protonmail.com

If space is limited, we will accept reservation requests in the order received.

If payment is required, you will receive a message in return explaining the payment procedure using Paypal. An alternative will be suggested if you cannot use Paypal.

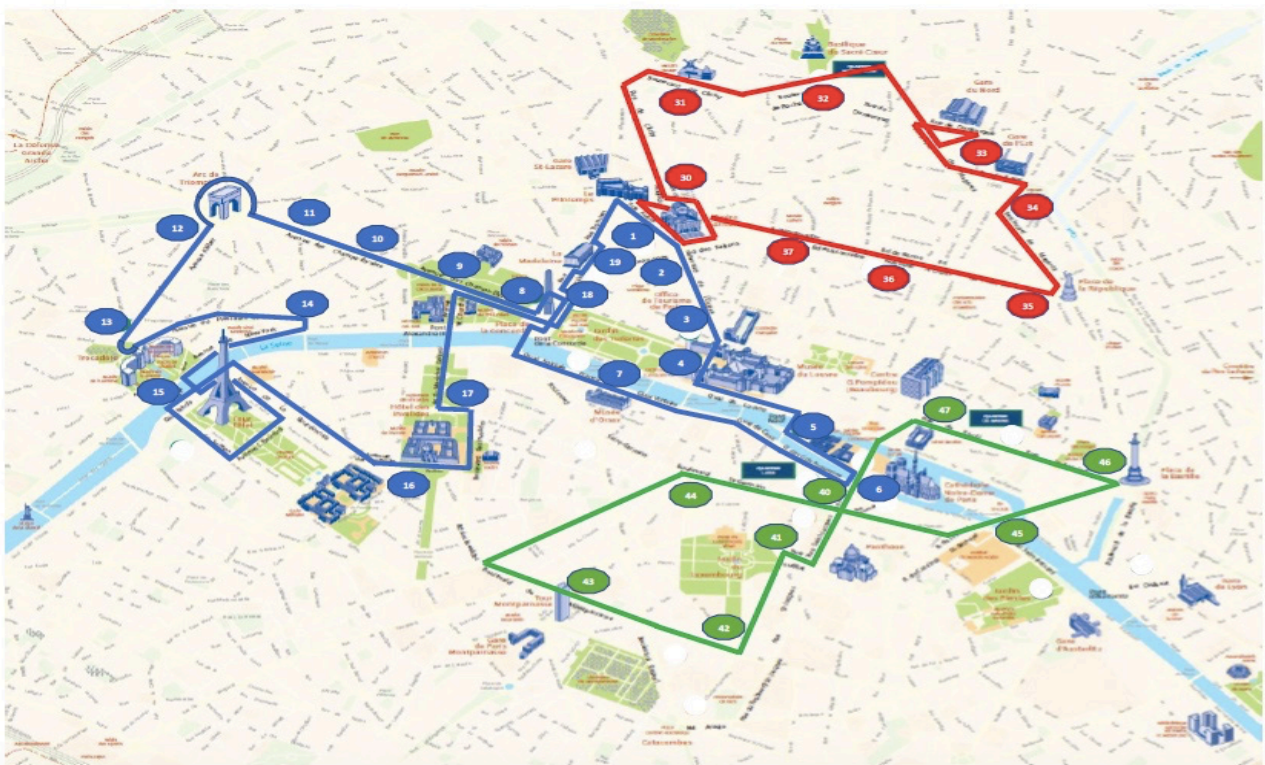
(1) Tour of Paris by bus – Reservation Required!

Tibetans interpreters and helpers will be there. Departure from the Inalco at 14:00.

IATS participants price: 13 €. Free for recipients of financial aid from IATS.

The blue tour, which we propose, allows the participants to view the most famous sites of Paris: the Eiffel Tower, Trocadéro, Arc de Triomphe, Champs-Élysées, Place de la Concorde and its Obelisk square, Opéra House, Louvre Museum, Banks of the river Seine, Notre-Dame Cathedral and Invalides.

First departure: 14h00 from Inalco.



(2) Visit to the Tibet Collection, Musée national des Arts asiatiques - Guimet – Reservation Required!

Industrialist Pierre Émile Guimet (1836-1918) travelled in Asia and was commissioned by the French Government to collect artifacts from the entire world and especially the Far-East. He opened the Guimet Museum, Iéna Square, in 1886, where his collections, expanded by others, are now exhibited.

Guided tours (1 hour) with 25 people each are scheduled throughout the afternoon.

Five guided tours (1 hour) with 25 people each are scheduled.

A guide from the Museum and a Tibetan interpreter will assist the participants. The visits are free with the possibility to use audiophones for free too. See:

<http://www.guimet.fr/collections/himalaya/>

Address: 6 Place d'Iéna, Paris 16th. Subway station: Iéna (or Trocadéro)

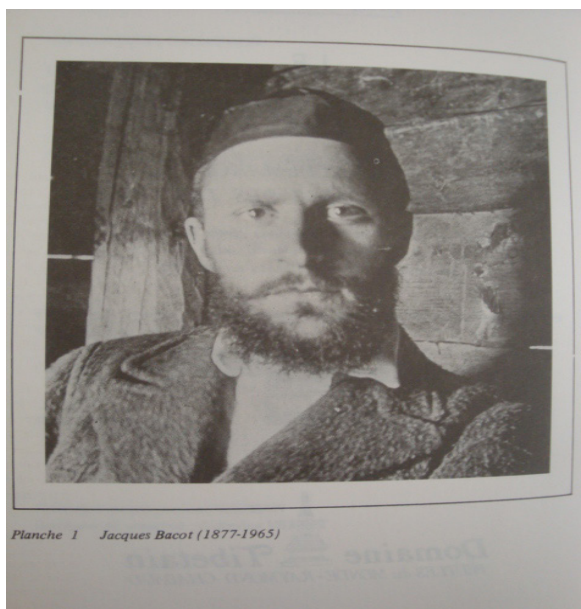


(3) A Special Exhibit organized by the École française d'Extrême-Orient: The travels of Jacques Bacot and the birth of modern Tibetan studies in France

A pioneering scholar of Tibetan studies, Jacques Bacot (1877-1965) traveled in eastern Tibet in 1906-1907 and 1909-1910. He made extended stays in Darjeeling and Kalimpong in 1913-1914, and again in 1931-1932. The chair of Tibetan studies at the École Pratique des Hautes Études was officially created for him in 1936. In his publications and teachings, Bacot shows an extensive expertise on Tibetan language, culture and history.

The exhibition displays a selection of Bacot's unpublished photographs stored at the École française d'Extrême-Orient, archive documents deposited at the Société asiatique, and personal items from the private collection of Olivier de Bernon, one of Bacot's grandsons. It highlights the French traveler's decisive contribution to the history of Tibetan studies.

Two guided tours with Samuel Thévoz, specialist in travel literature to Tibet and in the history of Tibetan studies in France, are scheduled at 16:00 and 17:00. **A reservation is required to join these tours, but the exhibit may be visited at other times, when the Maison de l'Asie is open, without booking.**



Maison de l'Asie, 22 avenue du Président Wilson, 75116 Paris, 1st floor and in the library.
A stone's throw from the Musée Guimet.
Free admission.

(4) Self-guided tour recommendations

Louvre Museum <https://www.louvre.fr/en>

The most-visited museum in the world, whose vast collections span the history of art from Egyptian antiquity to 1848. If you wish to visit, you must purchase your tickets online to avoid hours of waiting at the museum: <https://www.ticketlouvre.fr/louvre/b2c/index.cfm/home>

From the Inalco, the Louvre may be most easily reached by taking the metro line 14 from the Bibliothèque François Mitterrand station to Pyramides, from which the Louvre is a five minute walk.

Musée d'Orsay <https://www.musee-orsay.fr/en/home.html>

Paris's remarkable collection of the revolution in art from 1848 to 1914. Before you visit, purchase your tickets here: <https://www.musee-orsay.fr/en/visit/admission/admission-fees.html>

From the Inalco, the Musée d'Orsay may be reached directly by taking the rail line RER C from the Bibliothèque François Mitterrand station to the Musée d'Orsay stop.

Centre Pompidou <https://www.centrepompidou.fr/>

For lovers of 20th century art, the Pompidou is unparalleled – consider it to be a *gter gnas*! Here is the ticket office: <https://billetterie.centrepompidou.fr/selection/timeslotpass?productId=101342550086>

Take the line 14 metro, as explained above, to the Châtelet station, from which it is less than ten minutes on foot. Close by you'll find Paris's old market district, Les Halles, now a commercial center, close to which the Rue Montorgueil has become a neighborhood with numerous small cafés and restaurants of all sorts.

Musée du Quai Branly <http://www.quaibranly.fr/en/>

A unique museum space dedicated to the “first arts” of the indigenous peoples of Oceania, Asia, Africa and the Americas. The online ticket office is here: <http://www.quaibranly.fr/en/useful-information/come/purchase-your-ticket/>

To get there, follow the same route as to the Musée d'Orsay, but get down from the RER C train at the Invalides stop, from which the Quai Branly is a pleasant walk along the banks of Seine River. Alternatively, bus 63 may be taken to the Pont de l'Alma.

Musée National Picasso <http://www.museepicassoparis.fr/en/>

A museum devoted exclusively to the 20th century's most celebrated artist. Tickets are sold here: <http://www.museepicassoparis.fr/en/visit-2/individuals-museum-and-multimedia-guide/>

Take the line 14 metro, as explained for going to the Louvre, but get down at the Gare de Lyon station and transfer to metro line 1. Take that just two stops to the Saint-Paul station and walk from there. On the way, you will pass through the Marais neighborhood, teeming with street life, trendy boutiques and cafés, many smaller museums (Carnavalet, Cognacq-Jay, the Jewish Museum, etc.), the National Archives, and the Paris's old Jewish Quarter.

Grand Magasins - Boulevard Haussmann

For those who wish to “shop until they drop.” A neighborhood packed with sumptuous department stores: Printemps, Galeries Lafayette and more. To get there, take the line 14 to Gare Saint Lazare, from which “les grands magasins” are a short walk away.

(5) Evening dinner cruise on the Seine River - Reservation Required!

Bateaux parisiens: Enjoy a private tour and dinner cruise on board the Diamant II (350 people).

19h30: Boarding at Port de la Bourdonnais ;

20h30-23h00: cruise on the Seine ;

23h00-00h00: disembarking at Port de la Bourdonnais.

It is of course possible to participate in one of the afternoon tours and the evening river cruise, but it is imperative to be at the boarding location at 19:30 ! It is located close to the Invalides station of the RER C train line and near the Musée de Quai Branly.

IATS participants Price: 50 euros per person

Free for recipients of financial aid from the IATS.



(6) Maison Alexandra David-Néel (One day journey from Paris).

To be self-organized before or after the conference. The IATS has facilitated the contact but cannot organize this trip.



Alexandra David-Néel (1868-1969) was the first Western woman to reach Lhasa, in 1924, after four years in Amdo and Kham. In 1928, she settled at the foot of the Alps, in Digne-les-Bains, in a Tibetan style house that she had built and that she called “Samten Dzong”. This house is now a museum devoted to Alexandra David-Neel and her travels, and possesses an extremely rich archive collection (documents, texts, photos, correspondence).

The Maison Alexandra David-Néel is partnering with IATS 2019 to welcome researchers present at IATS and facilitate their research, before or after the IATS 2019 conference.



Practical information

Digne-les-Bains is located five hours by train and bus from Paris. The Alexandra David-Néel Museum can send researchers, upon request, train and bus timetables, as well as a list of hotels in Digne-les-Bains. For any request to consult the archives, contact the curator, Nadine Gomez, or Patricia Maillard, in charge of the archives, as soon as possible.

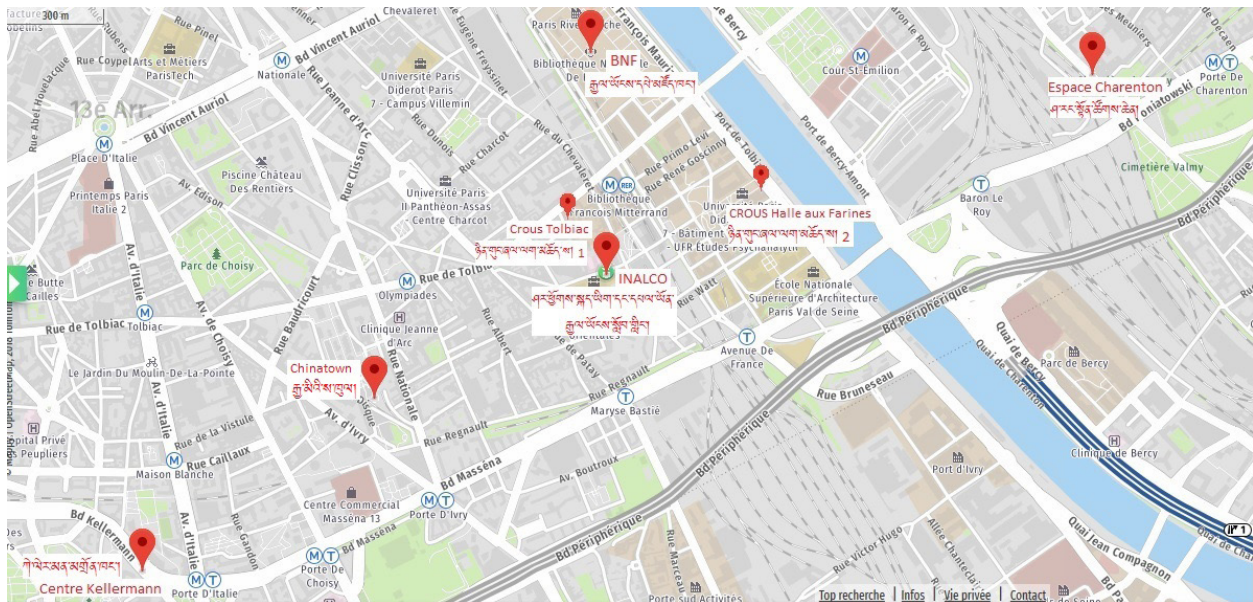
Contacts :

Secrétariat : maison.adn@dignelesbains.fr

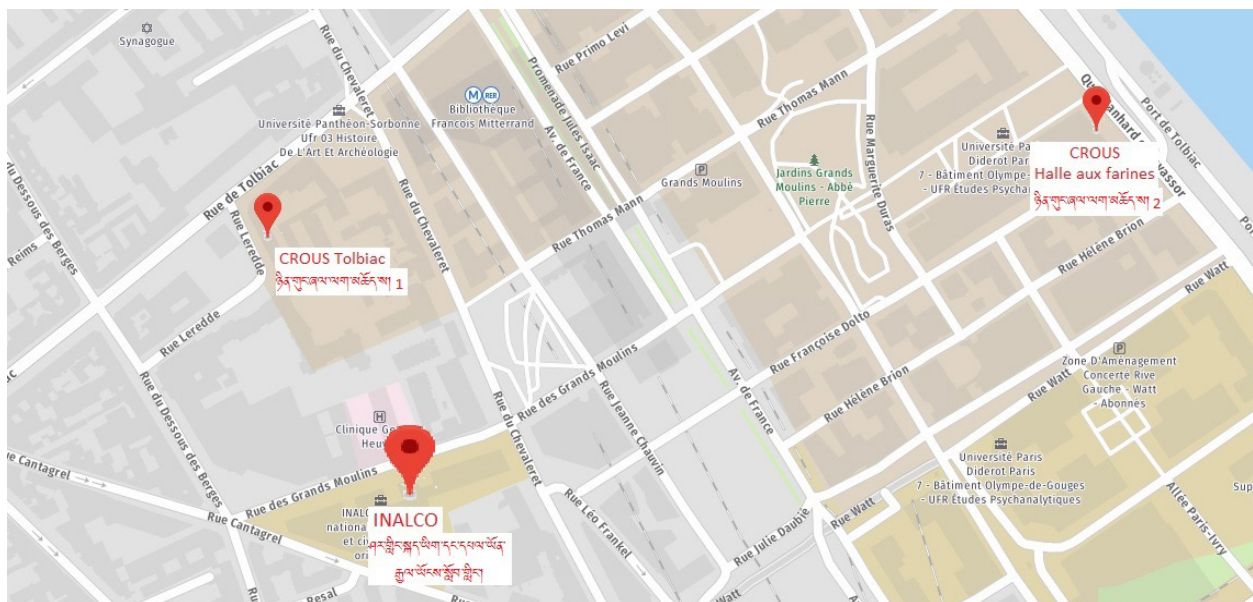
Nadine Gomez : direction.madn@dignelesbains.fr

Patricia Maillard : archives.madn@dignelesbains.fr

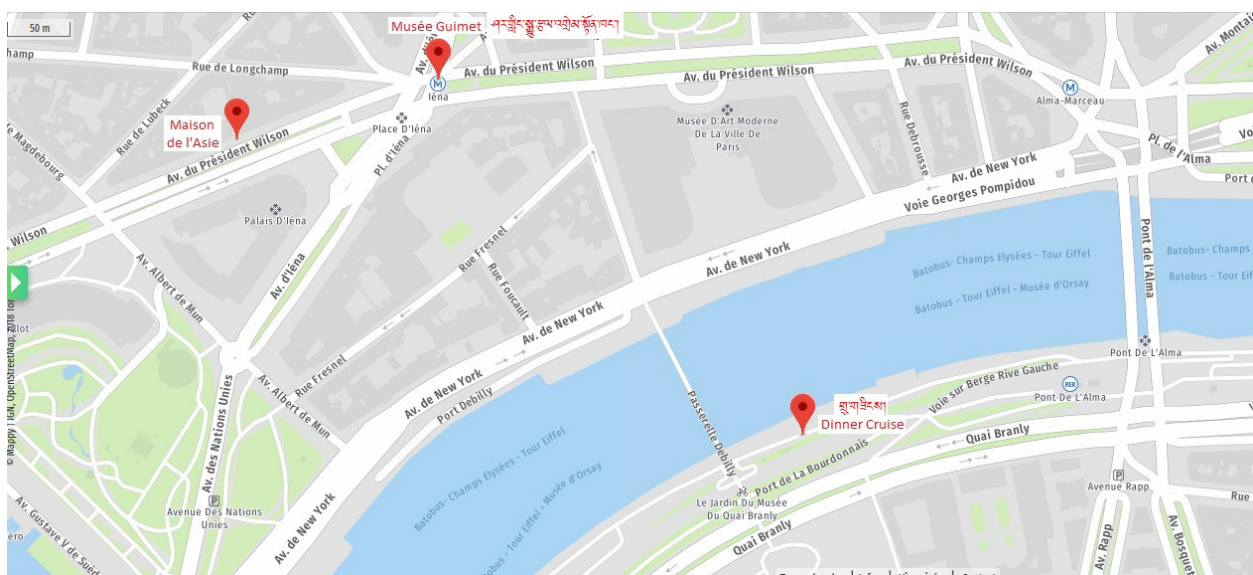




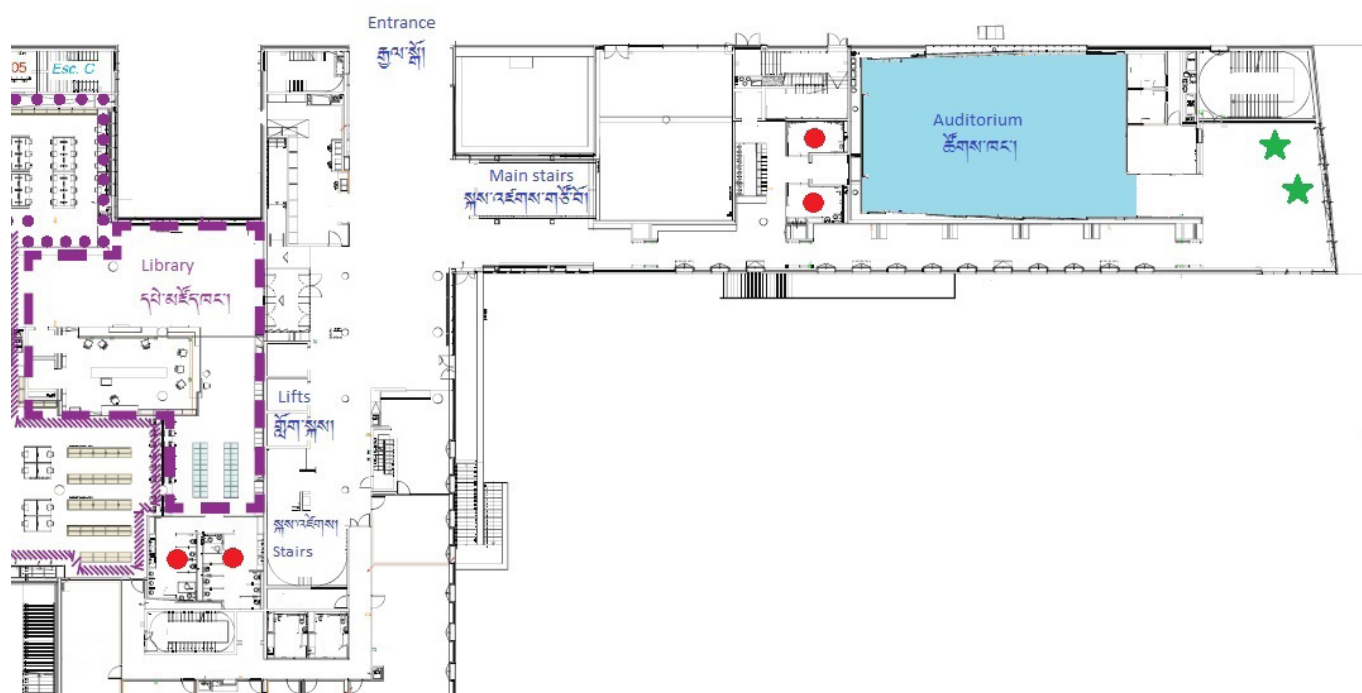
Map 1 - General View of the Inalco and the Surrounding Neighborhood



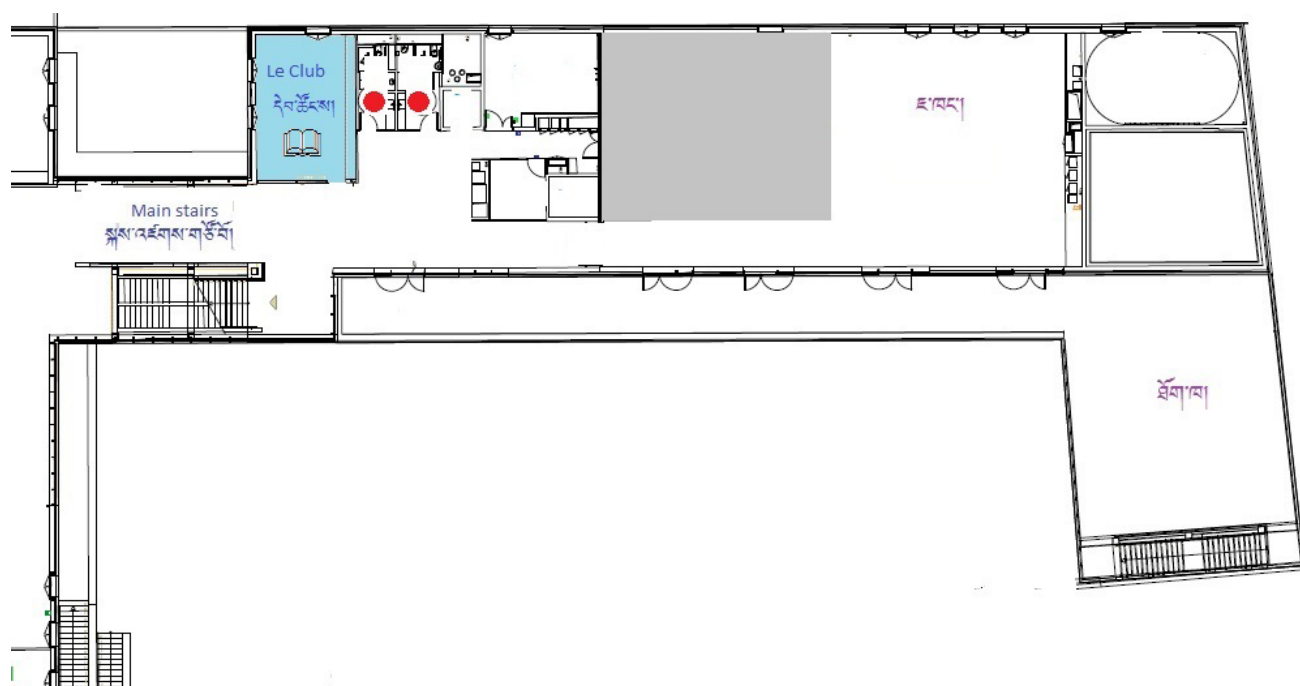
Map 2 The Inalco and CROUS cafeterias



Map 3 - Musée Guimet, Maison de l'Asie, and the embarkation for the dinner cruise

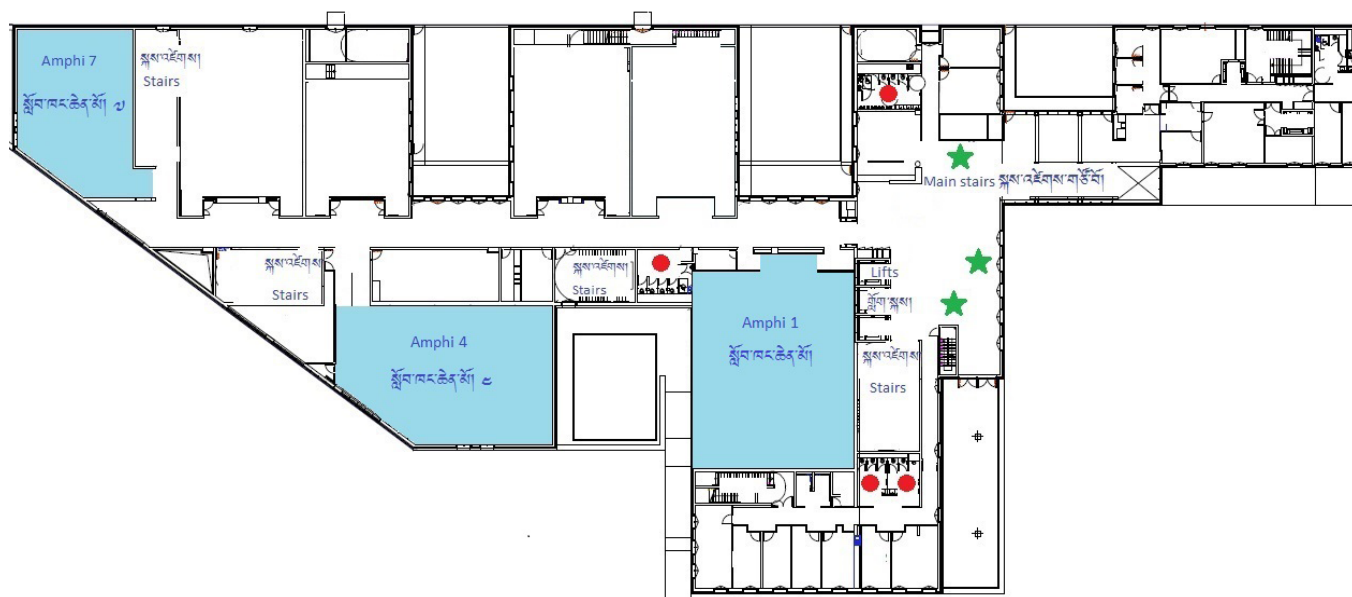


Plan 1 - Inalco ground floor



Plan 2- Inalco 1st floor

- Conference rooms མོས་སྒྲིང་ཚོགས་ཁང་།
- ★ Coffee break གསོལ་ཇའི་བར་མེད་།
- Toilets གསལ་ཕྱོད་།



Plan 3 - Inalco 2nd floor



Plan 4 - Inalco 3rd floor

- Conference rooms མཐོང་ཁྱེད་མོ།
- ★ Coffee break གསོལ་ཇའི་བར་སེང་།
- Toilets གསང་སྤྱོད།



Plan 5 - Inalco 4th floor

■	Conference rooms	གྲོས་ཐོག་ཆོག་ལང་།
★	Coffee break	གསོལ་ཇའི་བར་སེང་།
●	Toilets	གསང་སྤྱོད་།

Special Function Rooms

3.03 – Office of the 15th IATS Seminar. For late pick-up of registration materials, late payments, lost-and-found, and other administrative matters.

4.17 & 4.18 – Book exhibits.

4.23 & 4.24 – Exhibition of Tibetan calligraphy organized by the Latse Library, New York City. Tsultrim Gukypa, a calligrapher, will explain the notation of Tibetan music scores.

“Le Club” on the First Floor – Presentation of Taschen Books’ *Murals of Tibet*

The following publishers will be present at IATS2019 throughout the conference: Austrian Academy of Sciences Press, Biblia Impex, Brill, Columbia University Press, Gyuto Library, Institut d’Études Tibétaines, Motilal Banarsidass Publishing House, Serindia Publications, Shambhala Publications, Taschen, Tsadra Foundation, Vajra Publications, and Wisdom Publications. In addition, a selection of Tibet studies-related publications in French will be on display.

An exhibition of photographs is displayed in the gallery of the ground floor.

Paris
7-13 July 2019

